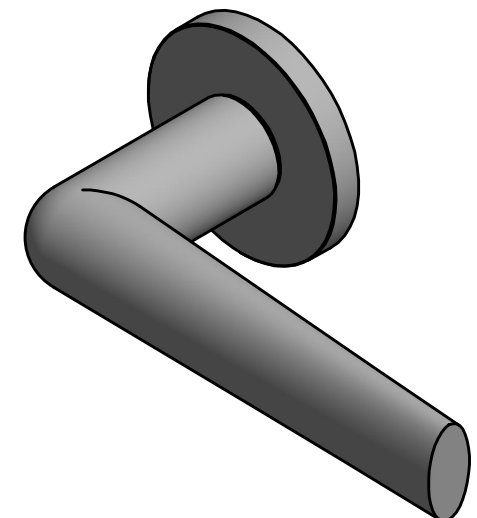
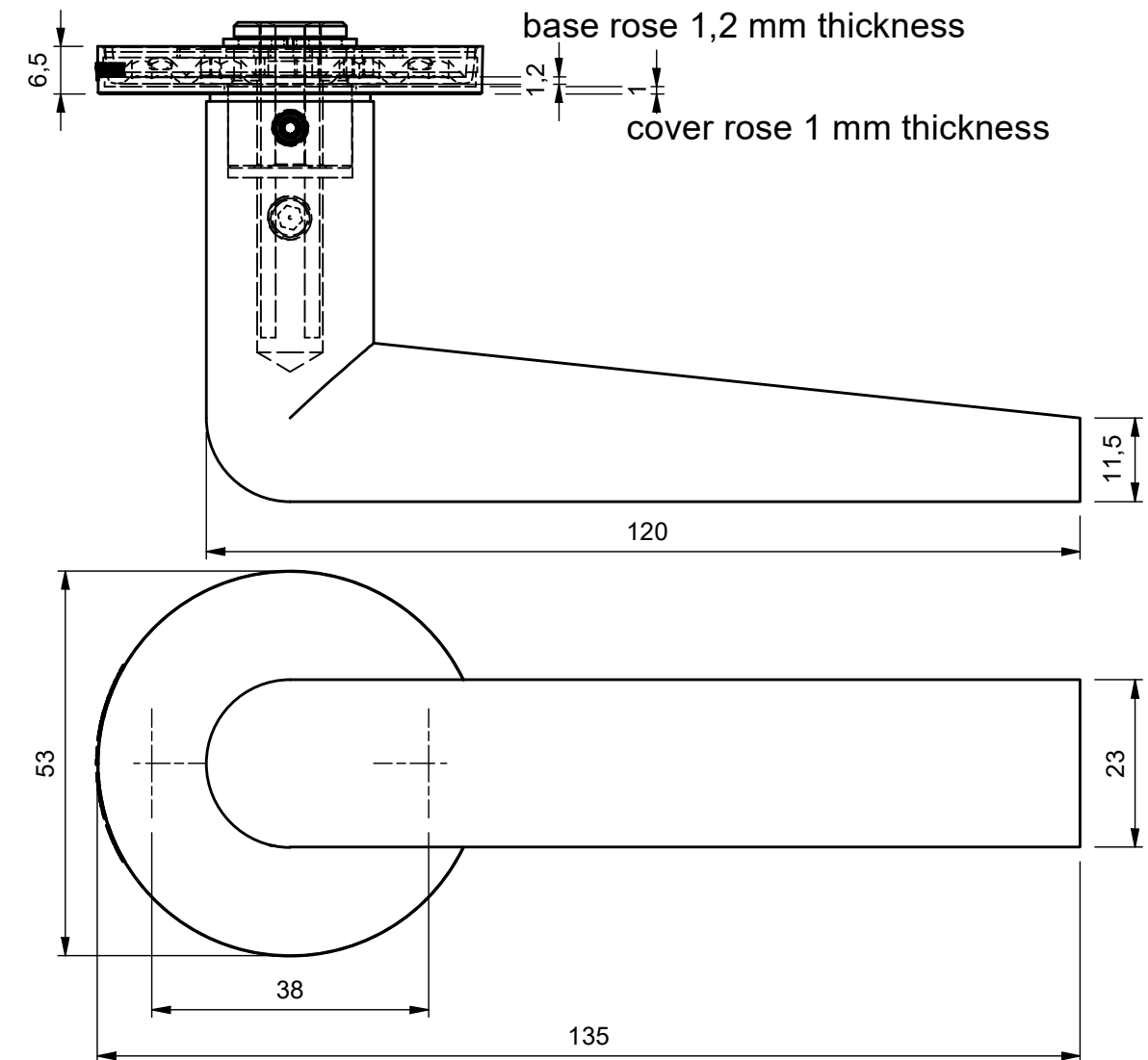
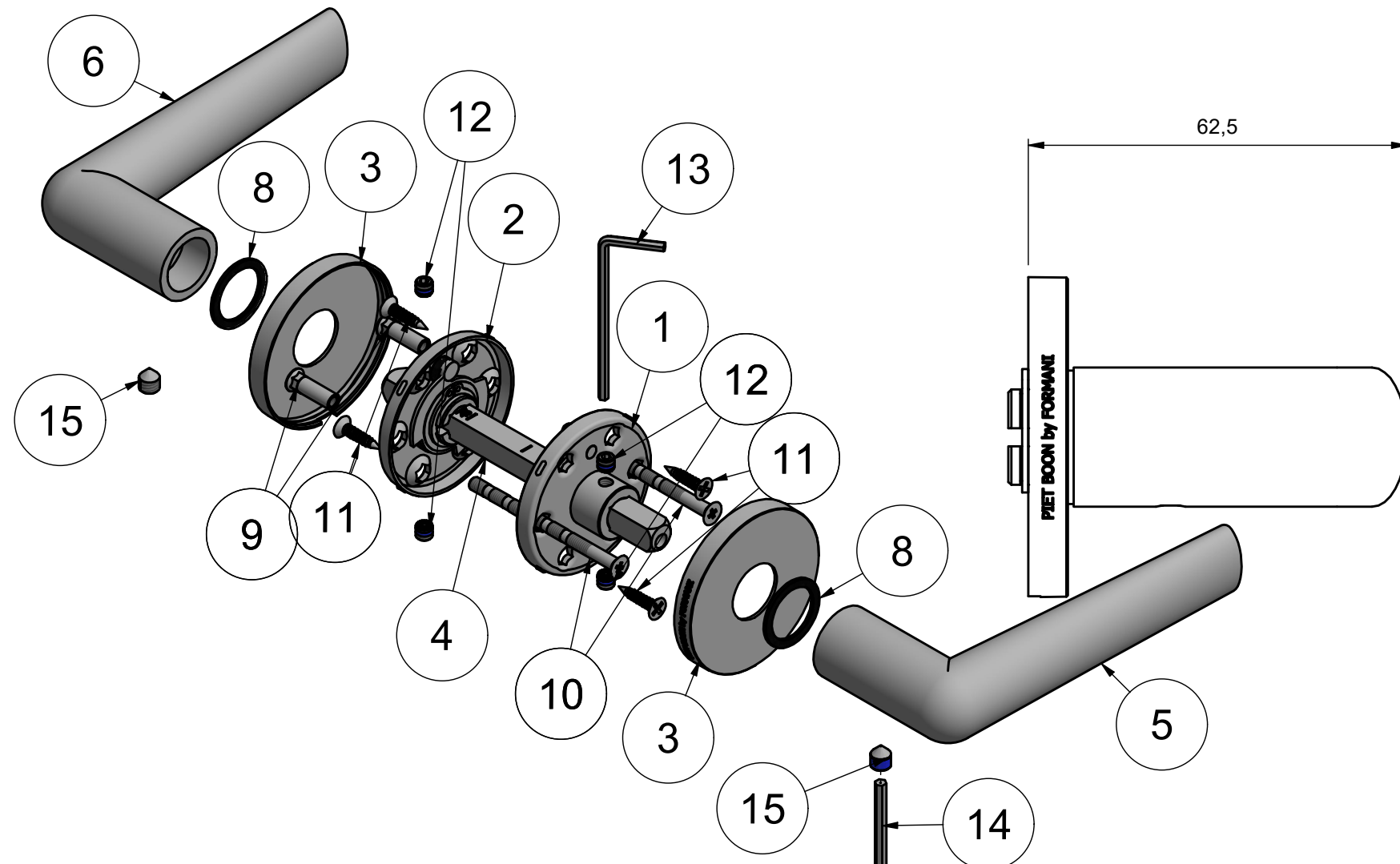


# PBI101-G

solid sprung lever handle  
on rose with stainless steel sub-rose  
stainless steel

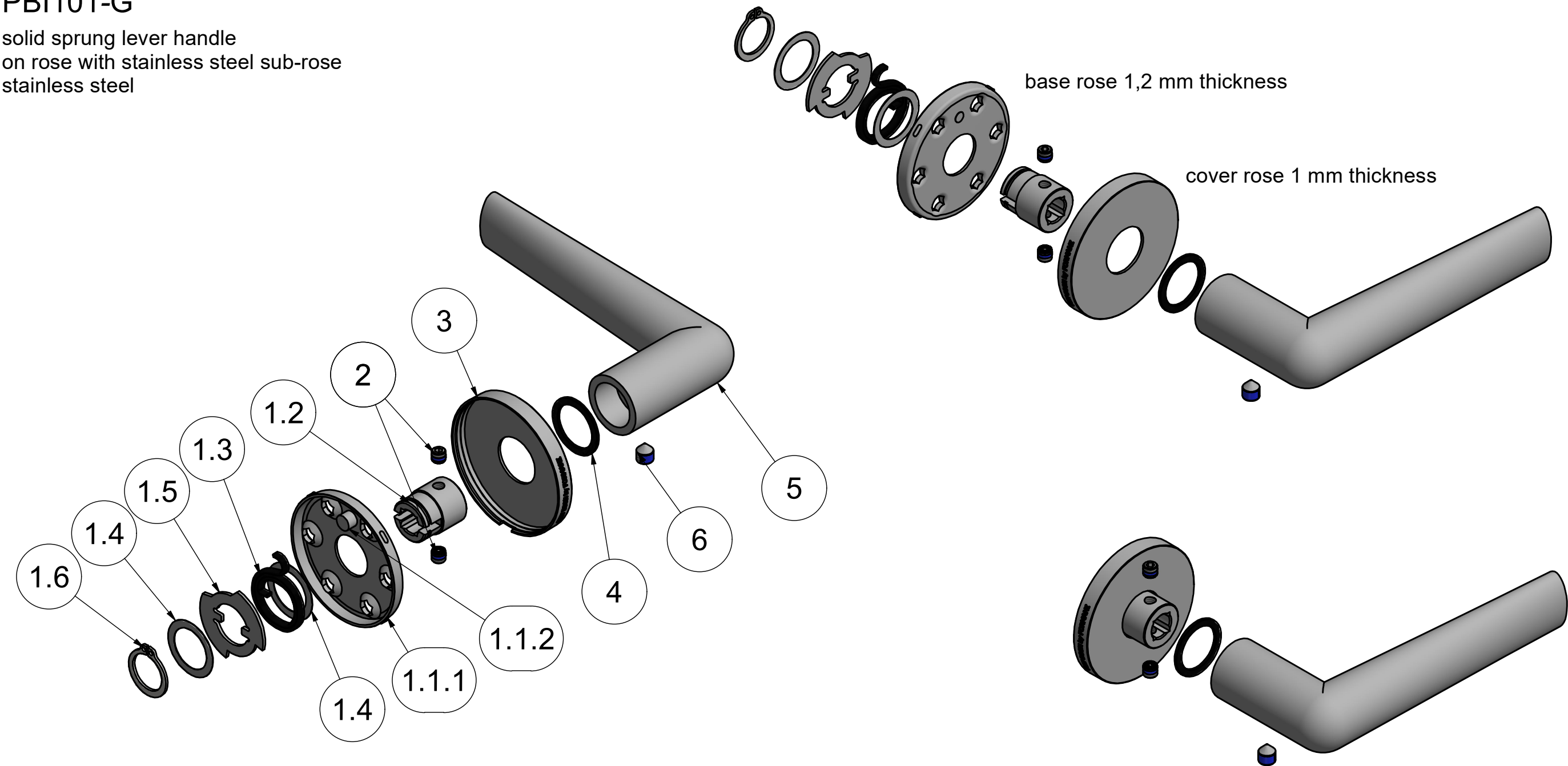


15	2	FGS_P0004_M6x7_G	Grub Screw M6x7 Glue	SS-304	1400-1450 °C	1,02 g
14	1	FAK_P0002_3mm_M6	ALLEN KEY 3 MM (M6)	steel	1427 °C	4,96 g
13	1	FAK_P0001_2,5mm_M5	ALLEN KEY 2.5 MM (M5)	steel	1427 °C	3,11 g
12	4	FGS_P0001_M5x4_GK	Grub Screw M5x4 Knurling with Glue	SS-304	1400-1450 °C	0,52 g
11	4	FSW_P0001	WOOD SCREW CSK DIN97 3.7x14 head diam 7.2	SS-304	1400-1450 °C	0,76 g
10	2	1501B002INNS0_SCREW_M4x60	JF BOOK SCREW SS M4x60 V01	SS-304	1400-1450 °C	6,02 g
9	2	1501B002INNS0_NUT_M4	JF BOOK NUT SS M4 V01	SS-304	1400-1450 °C	1,84 g
8	2	2001B012XXX0_22x17x1_PL	Washer PL OD22xID17x1 black	nylon 6.6	264 °C	0,17 g
6	1	3601D002_2P_PBI101GZR_L_V01	handle without rose L	SS-304	1400-1450 °C	378,23 g
5	1	3601D002_1P_PBI101GZR_R_V01	handle without rose R	SS-304	1400-1450 °C	378,23 g
4	1	FSP_P0005	BB SPINDLE SQ8 L110 ECC	1.0737	1427 °C	47,19 g
3	2	FRC_P0005	COVER ROSE BB 53 SPRING D18 V01 with LOGO LEFT	SS-304	1400-1450 °C	21,26 g
2	1	3601R002_2_PBI_PBA_R53_LOGO_L_MECH_V01	PBI-PBA-R53 LOGO LEFT	SS-304	1400-1450 °C	49,3 g
1	1	3601R002_1_PBI_PBA_R53_LOGO_R_MECH_V01	PBI-PBA-R53 LOGO RIGHT	SS-304	1400-1450 °C	49,3 g
Item	Qty	Part number		Material	Melting temp. °C	MASS

FORMANI® FORMANI HOLLAND B.V. EUROPALAAN 12 6199 AB MAASTRICHT-AIRPORT NL T +31 (0)43 308 90 00 INFO@FORMANI.COM WWW.FORMANI.COM	Type :	PBI101	Version:
	Description:	solid sprung lever handle on rose with stainless steel sub-rose stainless steel	Format
	Formani filename: 3601D002_PBI101G_SET_V02_DETAIL_MASS.dwg		A3
Drawn by: Christian Brimbois			
Creation date: 15-2-2022			

PBI101-G

solid sprung lever handle  
on rose with stainless steel sub-rose  
stainless steel



6	1	FGS_P0004_M6x7_G	Grub Screw M6x7 Glue	SS-304	1400-1450 °C	1,02 g
5	1	3601D002_1P_PBI101GZR_R_V01	handle without rose R	SS-304	1400-1450 °C	378,23 g
4	1	2001B012XXX0_22x17x1_PL	Washer PL OD22xID17x1 black	nylon 6.6	264 °C	0,17 g
3	1	FRC_P0005	COVER ROSE BB 53 SPRING D18 V01 with LOGO LEFT	SS-304	1400-1450 °C	21,26 g
2	2	FGS_P0001_M5x4_GK	Grub Screw M5x4 Knurling with Glue	SS-304	1400-1450 °C	0,52 g
1.6	1	FRR_P0001	DIN471 - 15 x 1 retaining ring JF	steel	1427 °C	0,86 g
1.5	1	FCW_P0001	BB CAM WASHER HOR	SS-304	1400-1450 °C	4,2 g
1.4	2	FWH_P0001	JF WASHER SS OD22xID16x02	SS-304	1400-1450 °C	0,29 g
1.3	1	FSL_P0001_MOUNT	BB SPRING PROD mounted	steel	1427 °C	3,66 g
1.2	1	FNE_P0001	NECK INSERT SQ8 D17 L20	SS-304	1400-1450 °C	20,37 g
1.1.2	1	FRB_P0002	Pin D6mm	SS-304	1400-1450 °C	1,05 g
1.1.1	1	FRB_P0001	Rose Base Plate	SS-304	1400-1450 °C	18,59 g
1.1	1	FRB_A0001	ROSE BASE BB SPRING	SS-304	1400-1450 °C	
1	1	3601R002_1_PBI_PBA_R53_LOGO_R_MECH_V01	PBI-PBA-R53 LOGO RIGHT	SS-304	1400-1450 °C	
Item	Qty	Part number	Description	Material	Melting temp. °C	MASS

Total weight: 451 g

FORMANI® Formani filename: 3601D002_PBI101G_R_V02_DET_MASS.dwg Drawn by: Christian Brimbois Creation date: 16-11-2022	FORMANI HOLLAND B.V. EUROPALAAN 12 6199 AB MAASTRICHT-AIRPORT NL T +31 (0)43 308 90 00 INFO@FORMANI.COM WWW.FORMANI.COM	Type : <b>PBI101</b>	Version:
	Description: solid sprung lever handle on rose with stainless steel sub-rose stainless steel		Format <b>A3</b>