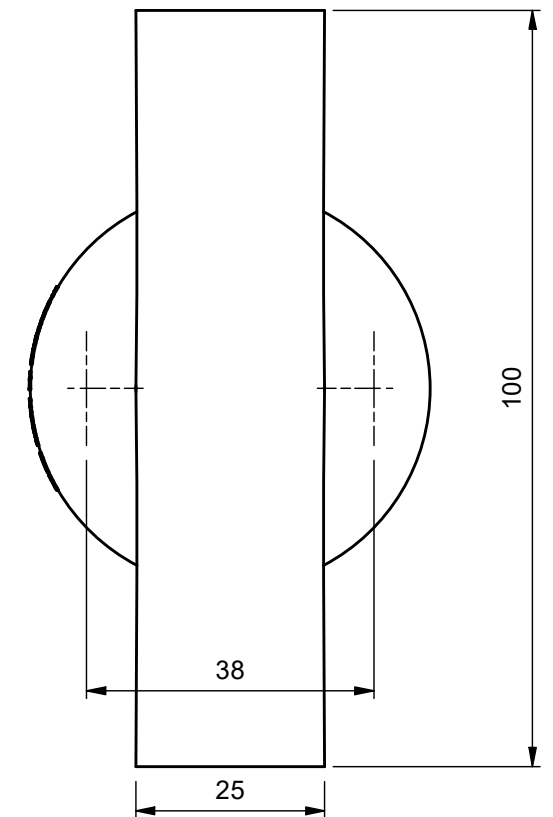
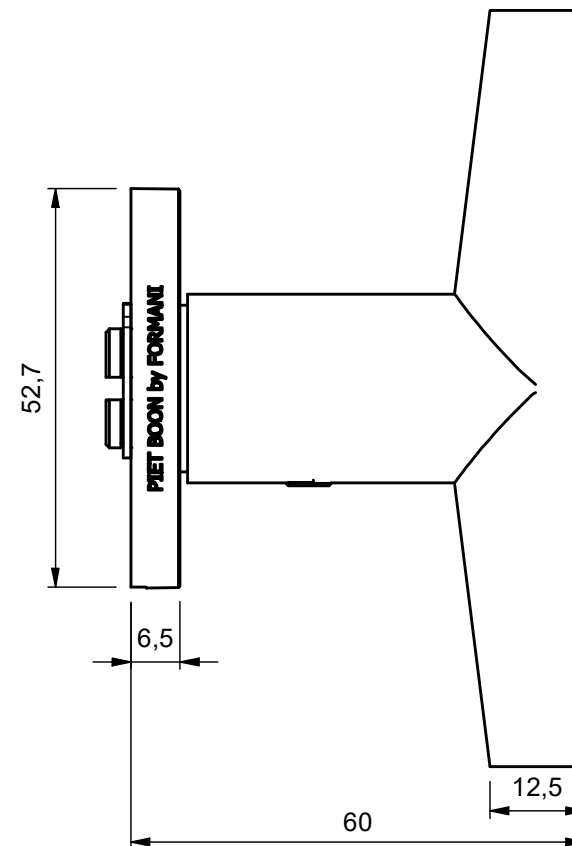
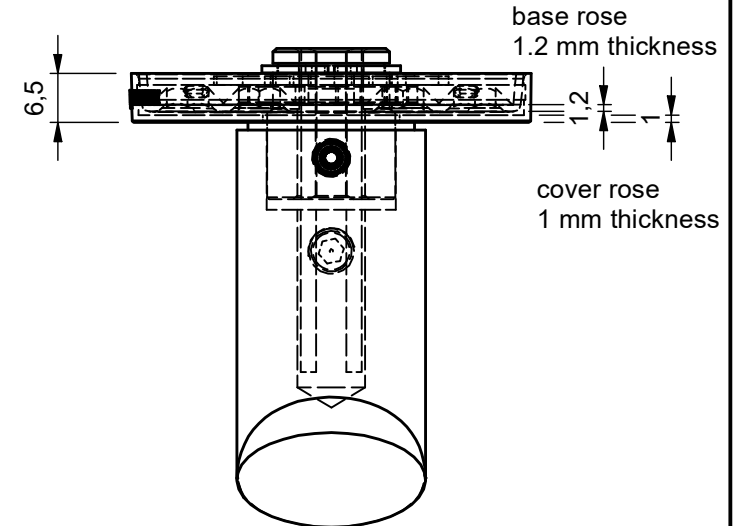
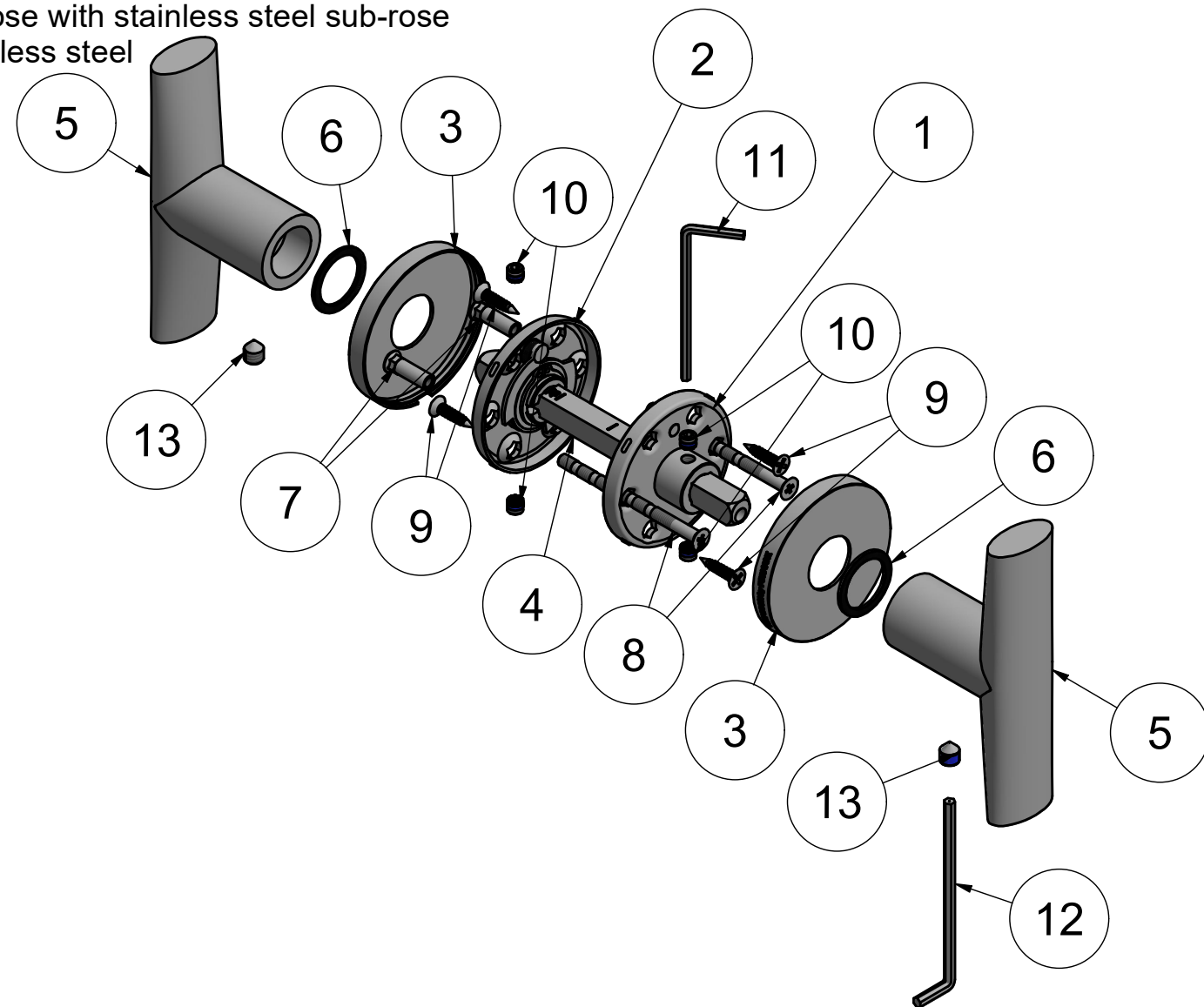


PBI103-G

solid sprung lever handle
on rose with stainless steel sub-rose
stainless steel



13	2	FGS_P0004_M6x7_G	Grub Screw M6x7 Glue	SS-304	1400-1450 °C	1,02 g
12	1	FAK_P0002_3mm_M6	ALLEN KEY 3 MM (M6)	steel	1427 °C	4,96 g
11	1	FAK_P0001_2,5mm_M5	ALLEN KEY 2.5 MM (M5)	steel	1427 °C	3,11 g
10	4	FGS_P0001_M5x4_GK	Grub Screw M5x4 Knurling with Glue	SS-304	1400-1450 °C	0,52 g
9	4	FSW_P0001	WOOD SCREW CSK DIN97 3.7x14 head diam 7.2	SS-304	1400-1450 °C	0,76 g
8	2	1501B002INNS0_SCREW_M4x60	JF BOOK SCREW SS M4x60 V01	SS-304	1400-1450 °C	6,02 g
7	2	1501B002INNS0_NUT_M4	JF BOOK NUT SS M4 V01	SS-304	1400-1450 °C	1,84 g
6	2	2001B012XXXX0_22x17x1_PL	Washer PL OD22xID17x1 black	nylon 6.6	264 °C	0,17 g
5	2	3601D004_P_PBI103GZR_V01	T-Handle without rose	SS-304	1400-1450 °C	353,34 g
4	1	FSP_P0005	BB SPINDLE SQ8 L110 ECC	1.0737	1427 °C	47,19 g
3	2	FRC_P0005	COVER ROSE BB 53 SPRING D18 V01 with LOGO LEFT	SS-304	1400-1450 °C	21,26 g
2	1	3601R002_2_PBI_PBA_R53_LOGO_L_MECH_V01	PBI-PBA-R53 LOGO LEFT	SS-304	1400-1450 °C	49,3 g
1	1	3601R002_1_PBI_PBA_R53_LOGO_R_MECH_V01	PBI-PBA-R53 LOGO RIGHT	SS-304	1400-1450 °C	49,3 g
Item	Qty	Part number		Material	Melting temp. °C	MASS

FORMANI®

FORMANI HOLLAND B.V.
EUROPALAAN 12
6199 AB MAASTRICHT-AIRPORT NL
T +31 (0)43 308 90 00
INFO@FORMANI.COM
WWW.FORMANI.COM

Type :	PBI103-G	Version:
Description:	solid sprung lever handle on rose with stainless steel sub-rose stainless steel	Format A3
Formani filename:	3601D004_PBI103G_SET_V02_DETAIL_MASS.dwg	
Drawn by:	Christian Brimbois	
Creation date:	17-11-2022	

A3