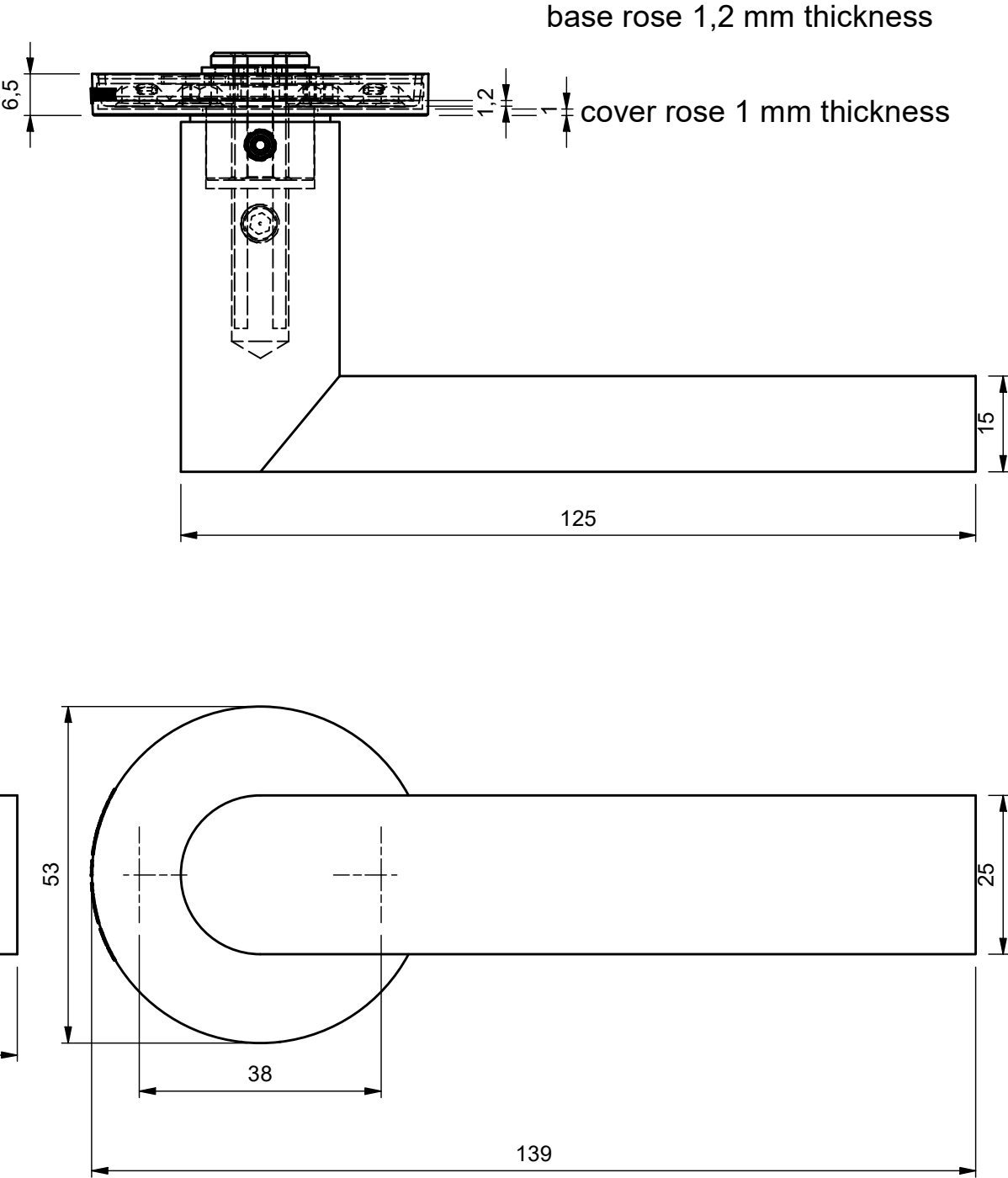
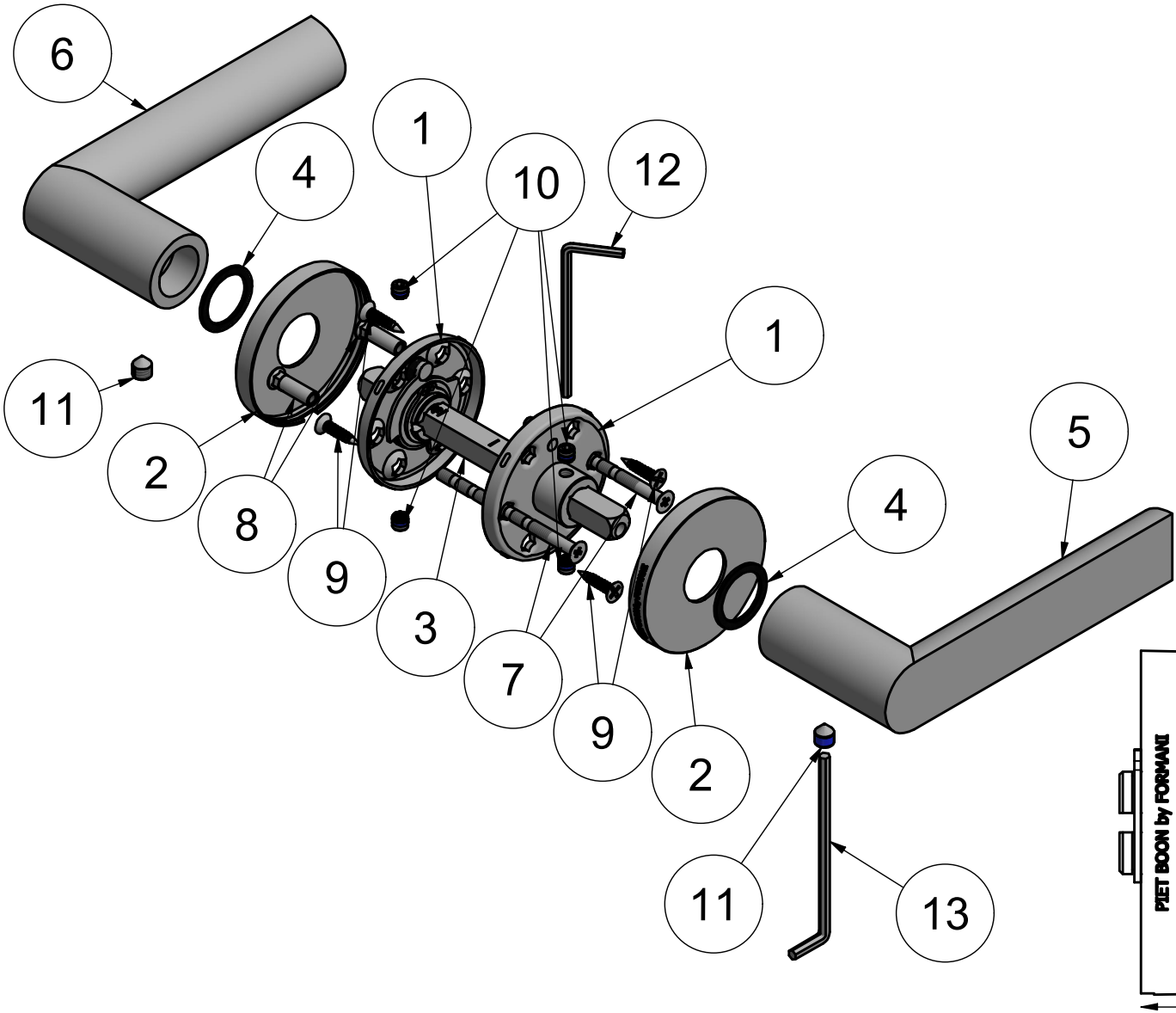


PBA101-G

solid sprung lever handle
on rose with stainless steel sub-rose
stainless steel

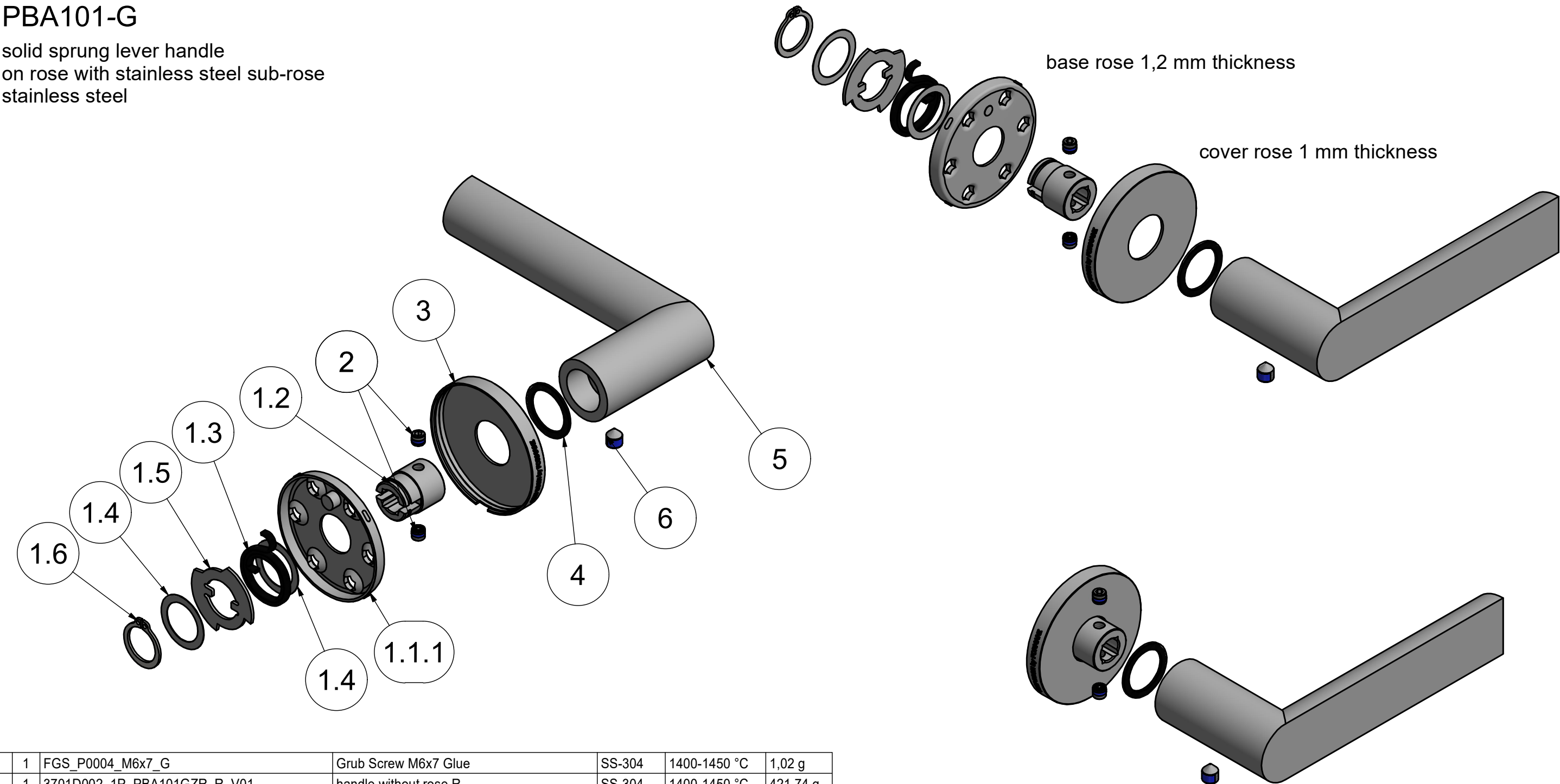


13	1	FAK_P0002_3mm_M6	ALLEN KEY 3 MM (M6)	steel	1427 °C	4,96 g
12	1	FAK_P0001_2,5mm_M5	ALLEN KEY 2.5 MM (M5)	steel	1427 °C	3,11 g
11	2	FGS_P0004_M6x7_G	Grub Screw M6x7 Glue	SS-304	1400-1450 °C	1,02 g
10	4	FGS_P0001_M5x4_GK	Grub Screw M5x4 Knurling with Glue	SS-304	1400-1450 °C	0,52 g
9	4	FSW_P0001	WOOD SCREW CSK DIN97 3.7x14 head diam 7.2	SS-304	1400-1450 °C	0,76 g
8	2	1501B002INNS0_NUT_M4	JF BOOK NUT SS M4 V01	SS-304	1400-1450 °C	1,84 g
7	2	1501B002INNS0_SCREW_M4x60	JF BOOK SCREW SS M4x60 V01	SS-304	1400-1450 °C	6,02 g
6	1	3701D002_2P_PBA101GZR_L_V01	handle without rose L	SS-304	1400-1450 °C	421,74 g
5	1	3701D002_1P_PBA101GZR_R_V01	handle without rose R	SS-304	1400-1450 °C	421,74 g
4	2	2001B012XXXX0_22x17x1_PL	Washer PL OD22xID17x1 black	nylon 6.6	264 °C	0,17 g
3	1	FSP_P0005	BB SPINDLE SQ8 L110 ECC	1.0737	1427 °C	47,19 g
2	2	FRC_P0005	COVER ROSE BB 53 SPRING D18 V01 with LOGO LEFT	SS-304	1400-1450 °C	21,26 g
1	2	FRB_P0001	Rose Base Plate	SS-304	1400-1450 °C	18,59 g
Item	Qty	Part number	Description	Material	Melting temp. °C	MASS

<div>FORMANI®</div>		<div>FORMANI HOLLAND B.V. EUROPALAAN 12 6199 AB MAASTRICHT-AIRPORT NL T +31 (0)43 308 90 00 INFO@FORMANI.COM WWW.FORMANI.COM</div>	<div>Type :</div> <div>PBA101</div>	<div>Version:</div>
<div>Formani filename: 3701D002_PBA101G_V01_SET_DETAIL_MASS.dwg</div>			<div>Description:</div> <div>solid sprung lever handle on rose with stainless steel sub-rose stainless steel</div>	<div>Format</div> <div>A3</div>
<div>Drawn by: Christian Brimbois</div>				
<div>Creation date: 17-11-2022</div>				

PBA101-G

solid sprung lever handle
on rose with stainless steel sub-rose
stainless steel



6	1	FGS_P0004_M6x7_G	Grub Screw M6x7 Glue	SS-304	1400-1450 °C	1,02 g
5	1	3701D002_1P_PBA101GZR_R_V01	handle without rose R	SS-304	1400-1450 °C	421,74 g
4	1	2001B012XXXX0_22x17x1_PL	Washer PL OD22xID17x1 black	nylon 6.6	264 °C	0,17 g
3	1	FRC_P0005	COVER ROSE BB 53 SPRING D18 V01 with LOGO LEFT	SS-304	1400-1450 °C	21,26 g
2	2	FGS_P0001_M5x4_GK	Grub Screw M5x4 Knurling with Glue	SS-304	1400-1450 °C	0,52 g
1.6	1	FRR_P0001	DIN471 - 15 x 1 retaining ring JF	steel	1427 °C	0,86 g
1.5	1	FCW_P0001	BB CAM WASHER HOR	SS-304	1400-1450 °C	4,2 g
1.4	2	FWH_P0001	JF WASHER SS OD22xID16x02	SS-304	1400-1450 °C	0,29 g
1.3	1	FSL_P0001_MOUNT	BB SPRING PROD mounted	steel	1427 °C	3,66 g
1.2	1	FNE_P0001	NECK INSERT SQ8 D17 L20	SS-304	1400-1450 °C	20,37 g
1.1.2	1	FRB_P0002	Pin D6mm	SS-304	1400-1450 °C	1,05 g
1.1.1	1	FRB_P0001	Rose Base Plate	SS-304	1400-1450 °C	18,59 g
1.1	1	FRB_A0001	ROSE BASE BB SPRING	SS-304	1400-1450 °C	
1	1	3601R002_1_PBI_PBA_R53_LOGO_R_MECH_V01	PBI-PBA-R53 LOGO RIGHT	SS-304	1400-1450 °C	
Item	Qty	Part number	Description	Material	Melting temp. °C	MASS

Total weight: 494 g

FORMANI® FORMANI HOLLAND B.V. EUROPALAAN 12 6199 AB MAASTRICHT-AIRPORT NL T +31 (0)43 308 90 00 INFO@FORMANI.COM WWW.FORMANI.COM	Type :	PBA101	Version:
	Formani filename: 3701D002_PBA101G_R_V01_DETAIL_MASS.dwg	Description: solid sprung lever handle on rose with stainless steel sub-rose stainless steel	Format
	Drawn by: Christian Brimbois		A3
Creation date: 17-11-2022			