

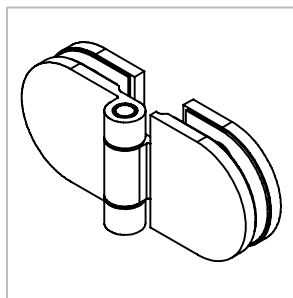
Technische Daten:
Glastürscharnier - Aksun

Datasheet:
Glass door hinge - Aksun

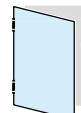
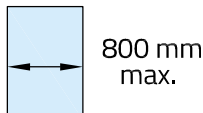
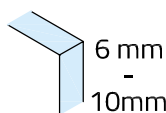
Art. 77410201000-10

Art. 77410201000-12

Art. 77410201000-26



Ausführung:
Options:



DIN links/left
+
DIN rechts/right



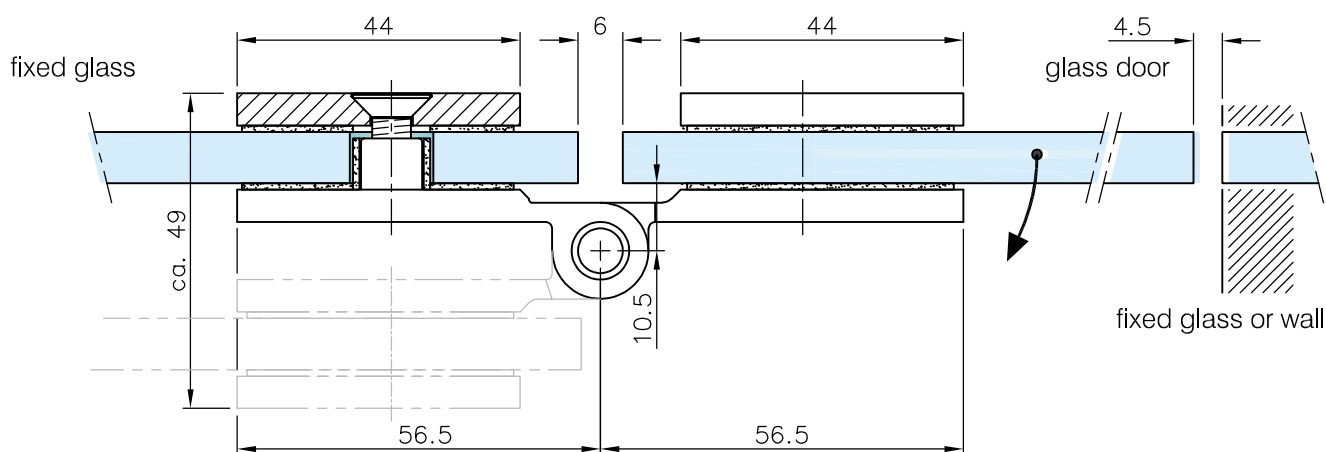
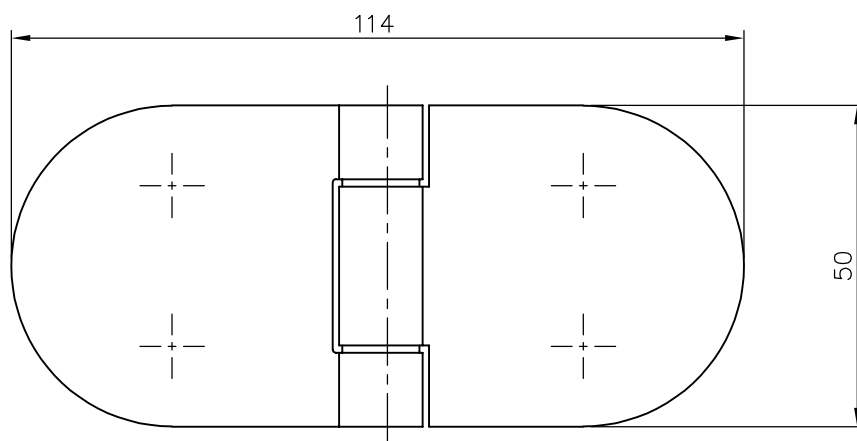
Material: V2A
Material: Stainless steel AISI 304

Gewicht: / Weight: 0,423 kg

Oberflächen:
Finish: Edelstahl-Design
Stainless steel design

Chrom-Design
Chrome design

Anthrazit-Design
Anthracite design



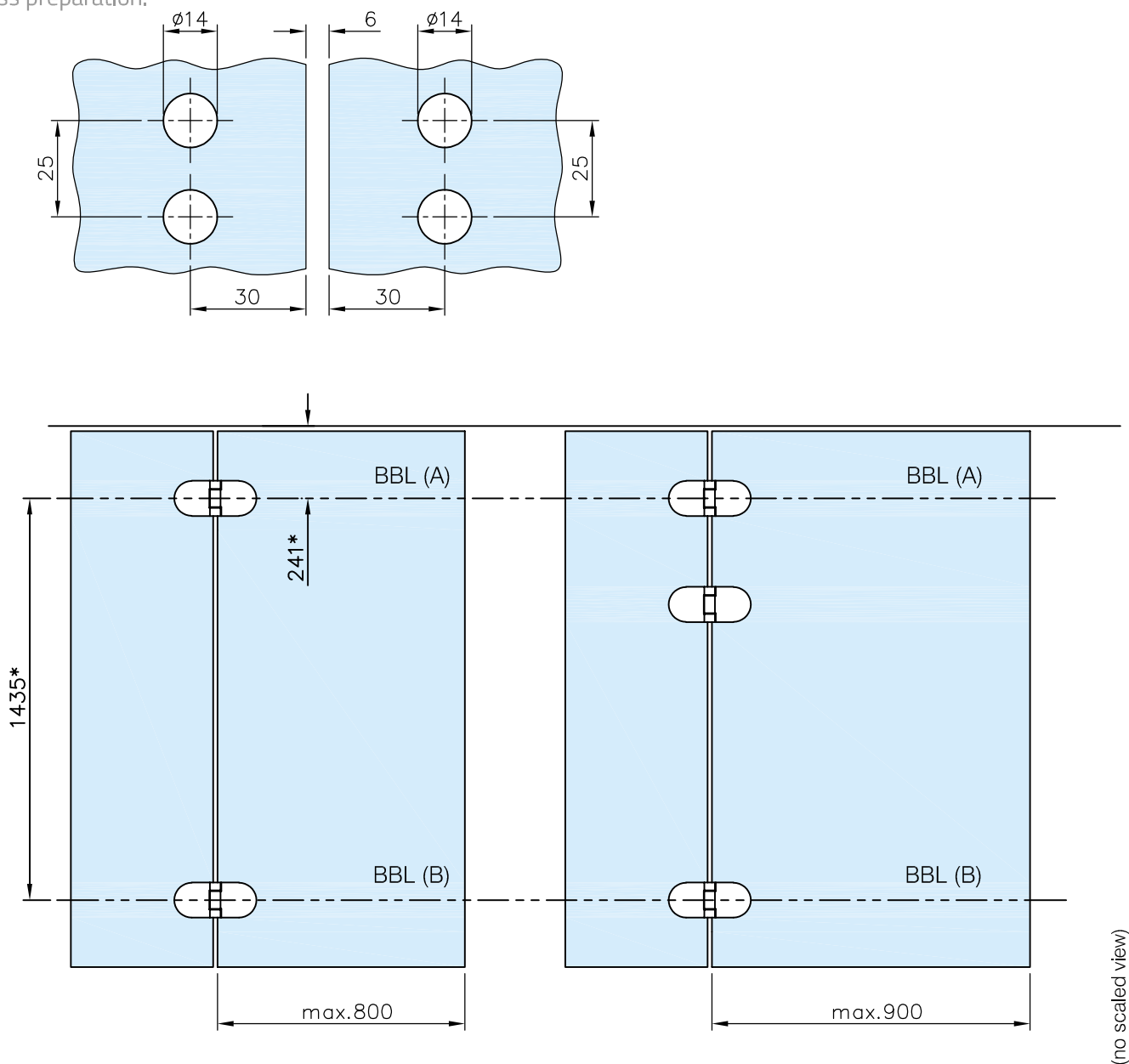
*drawing shows
8mm glass

G-FITTINGS GmbH

Marie-Curie-Straße 16-18
46446 Emmerich am Rhein
T +49 (0)2822 962 0
F +49 (0)2822 962 221
E sales@g-fittings.com

Art. 77410201000-10
Art. 77410201000-12
Art. 77410201000-26

Glasbearbeitung:
Glass preparation:



(no scaled view)

G-FITTINGS GmbH

Marie-Curie-Straße 16-18
46446 Emmerich am Rhein
T +49 (0)2822 962 0
F +49 (0)2822 962 221
E sales@g-fittings.com

Empfehlungsmaße entsprechend *DIN 18268 Recommended dimensions according to *DIN 18268		
<i>Glastürhöhe</i> <i>Glass door height</i>	<i>Abstand</i> <i>Zargenfalz - BBL(A)</i> <i>distance</i> <i>frame rebate - BBL(A)</i>	<i>Abstand</i> <i>BBL(A) - BBL(B)</i> <i>distance</i> <i>BBL(A) - BBL(B)</i>
1860 mm - 2110 mm	241 +1 mm	1435 mm ±0,5 mm
2111 mm - 2235 mm	241 +1 mm	1560 mm ±0,5 mm
2236 mm - 2360 mm	241 +1 mm	1685 mm ±0,5 mm