

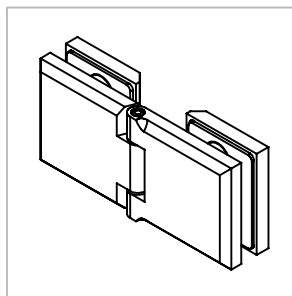
Technische Daten:  
Glastürscharnier - Suzanne

Datasheet:  
Glass door hinge - Suzanne

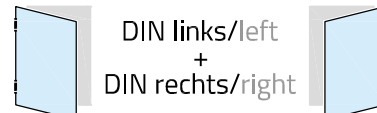
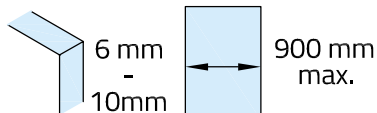
Art. 77410305000-10

Art. 77410305000-12

Art. 77410305000-26



Ausführung:  
Options:



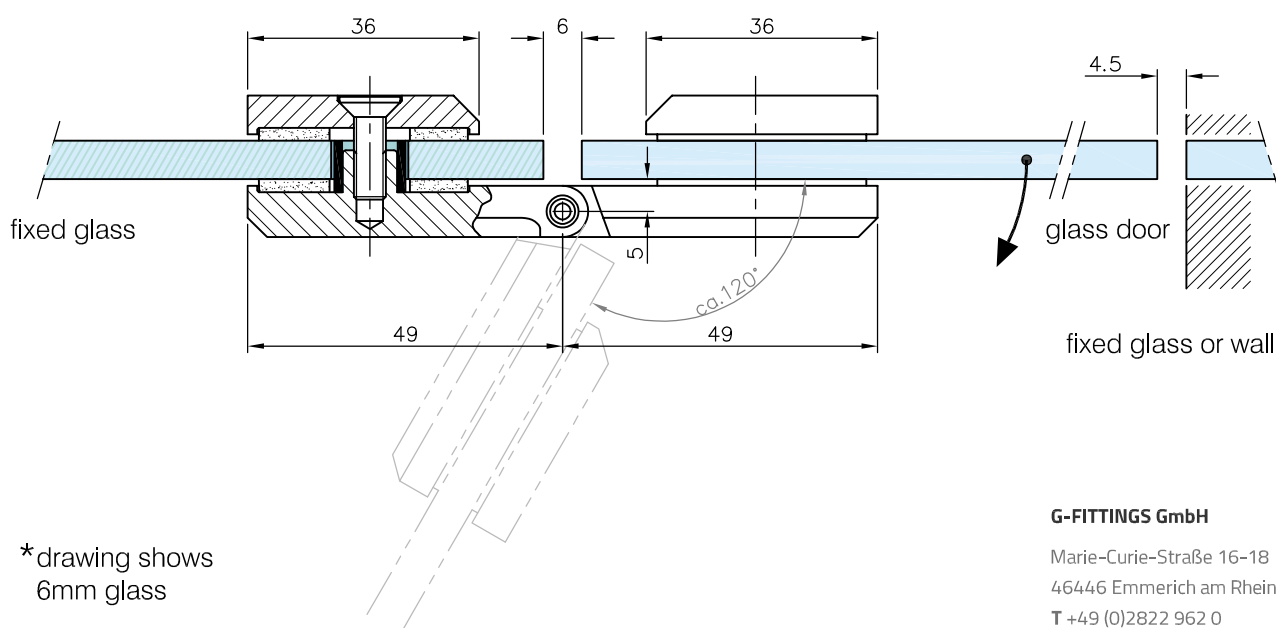
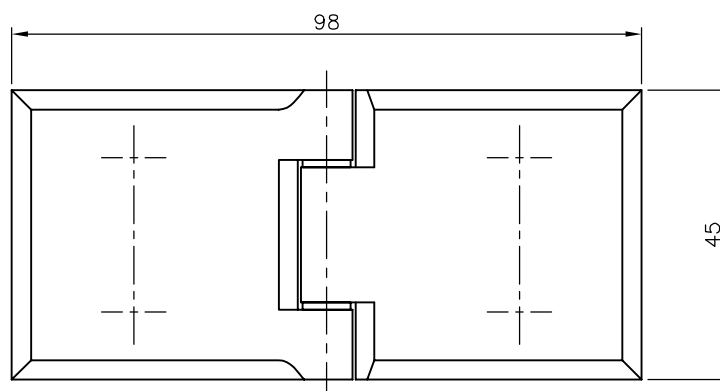
Material: V2A  
Material: Stainless steel AISI 304

Gewicht: / Weight: 0,411 kg

Oberflächen: Edelstahl-Design  
Finish: Stainless steel design

Chrom-Design  
Chrome design

Anthrazit-Design  
Anthracite design



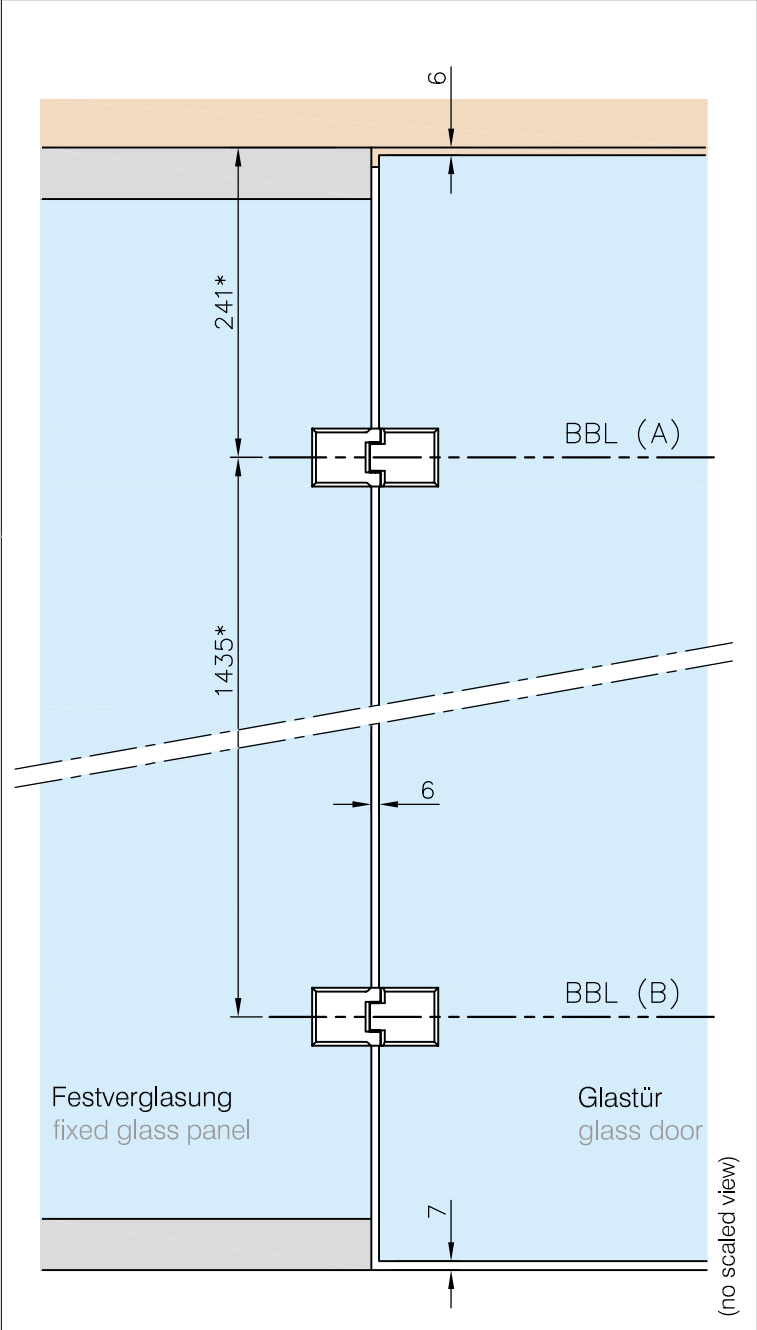
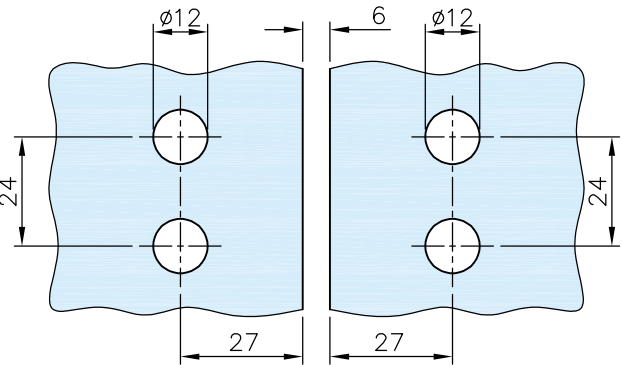
\*drawing shows  
6mm glass

**G-FITTINGS GmbH**

Marie-Curie-Straße 16-18  
46446 Emmerich am Rhein  
T +49 (0)2822 962 0  
F +49 (0)2822 962 221  
E sales@g-fittings.com

Art. 77410305000-10  
Art. 77410305000-12  
Art. 77410305000-26

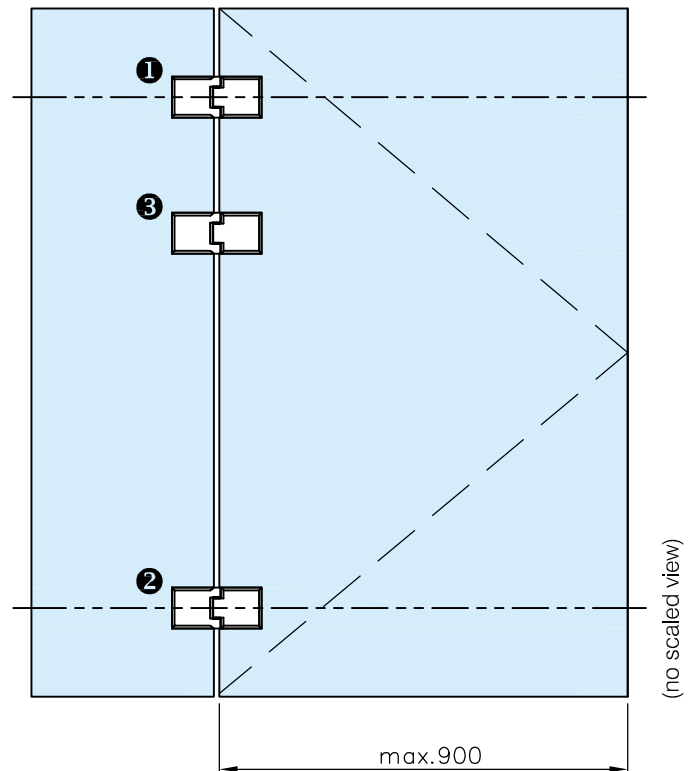
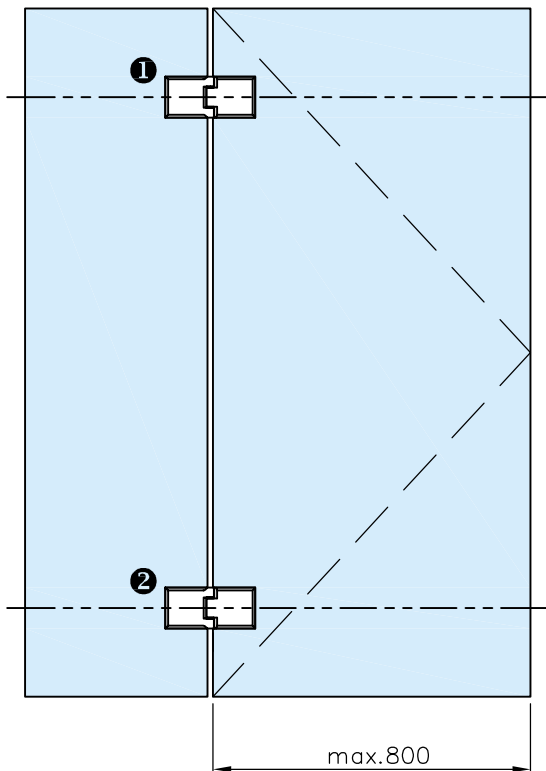
Glasbearbeitung:  
Glass preparation:



Empfehlungsmaße entsprechend *DIN 18268 Recommended dimensions according to *DIN 18268		
Glastürhöhe Glass door height	Abstand Zargenfalz - BBL(A) distance frame rebate - BBL(A)	Abstand BBL(A) - BBL(B) distance BBL(A) - BBL(B)
1860 mm - 2110 mm	241 +1 mm	1435 mm ±0,5 mm
2111 mm - 2235 mm	241 +1 mm	1560 mm ±0,5 mm
2236 mm - 2360 mm	241 +1 mm	1685 mm ±0,5 mm

Art. 77410305000-10  
Art. 77410305000-12  
Art. 77410305000-26

Breite/Ausladung:  
Width/extension:



**G-FITTINGS GmbH**

Marie-Curie-Straße 16-18  
46446 Emmerich am Rhein  
T +49 (0)2822 962 0  
F +49 (0)2822 962 221  
E sales@g-fittings.com