

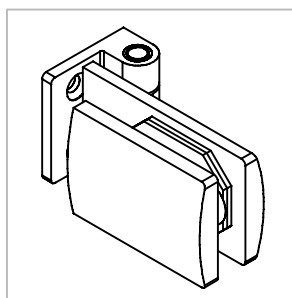
Technische Daten:  
Glastürscharnier - KIMBERLIE

Datasheet:  
Glass door hinge - KIMBERLIE

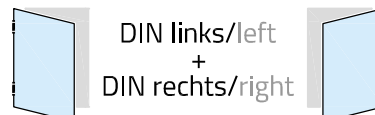
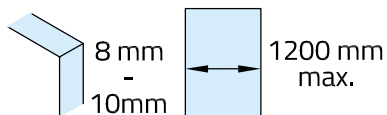
Art. 77410504090-10

Art. 77410504090-12

Art. 77410504090-26



Ausführung:  
Options:



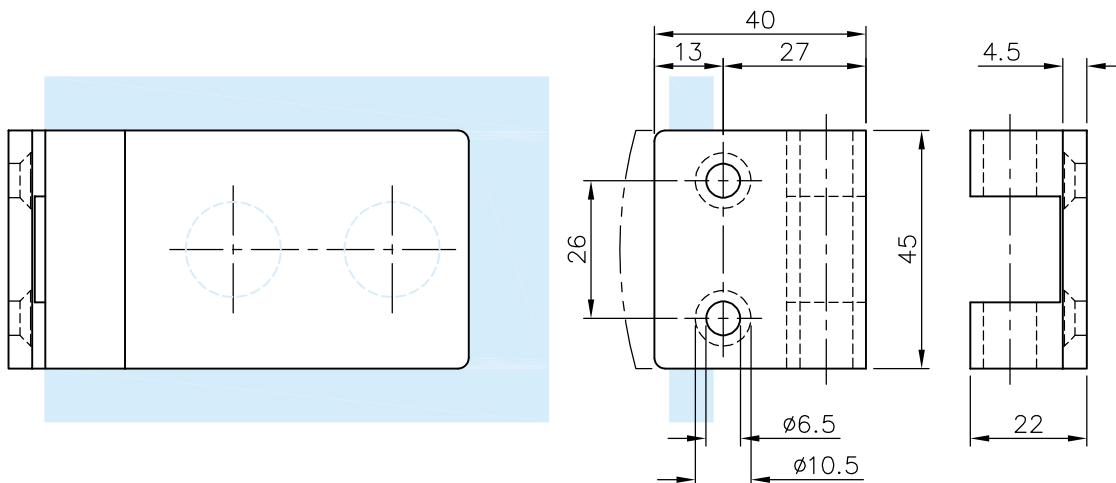
Material: V2A  
Material: Stainless steel AISI 304

Gewicht: / Weight: 0,490 kg

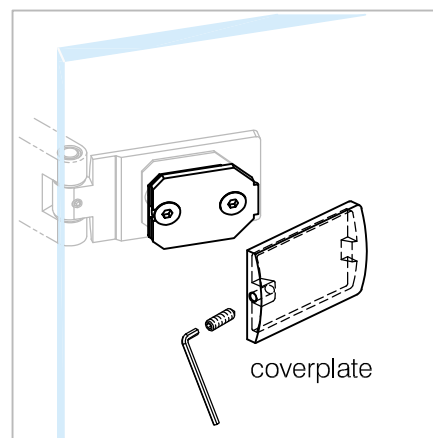
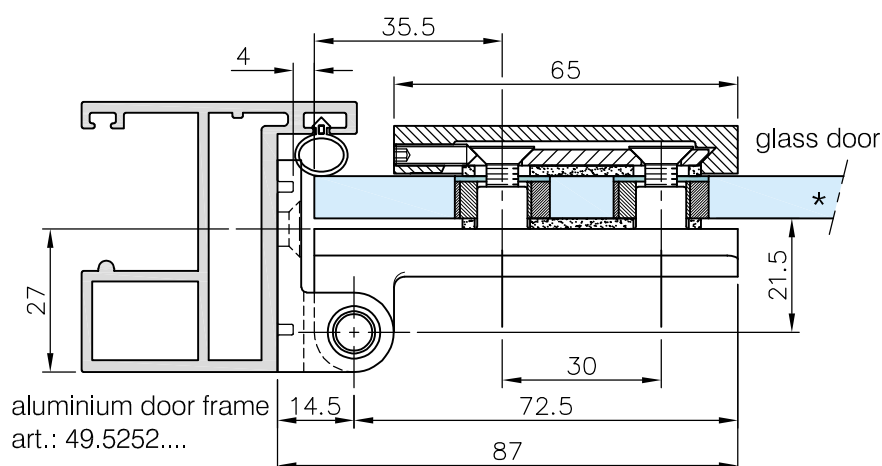
Oberflächen: Edelstahl-Design  
Finish: Stainless steel design

Chrom-Design  
Chrome design

Anthrazit-Design  
Anthracite design



mounting part frame (rear view)



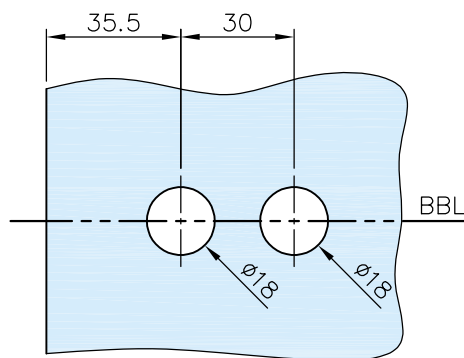
\*drawing shows  
8mm glass

Art. 77410504090-10

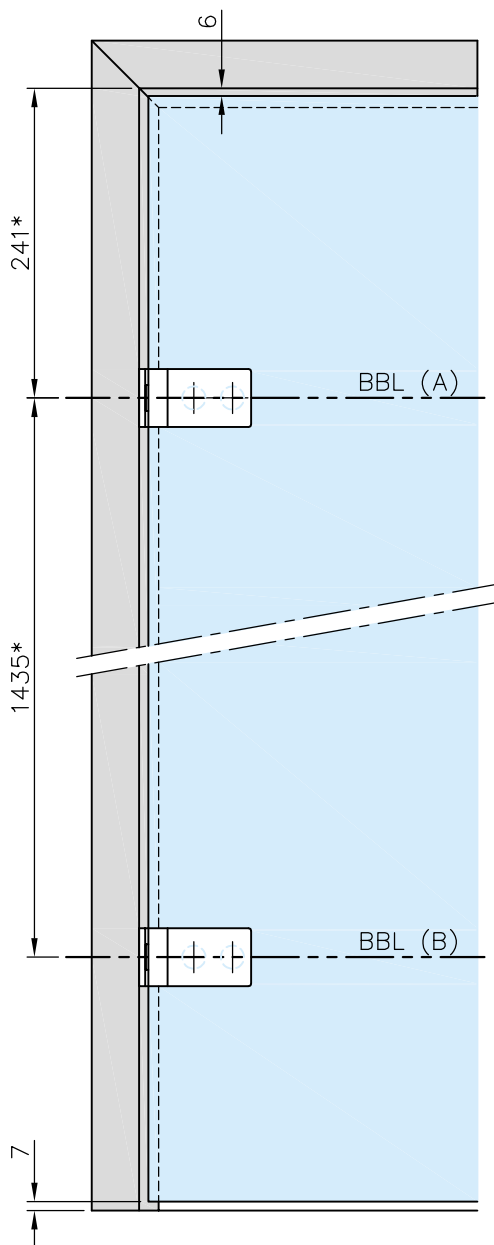
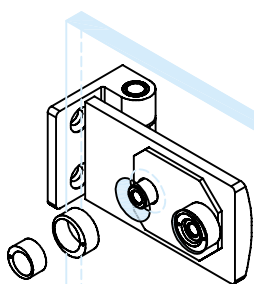
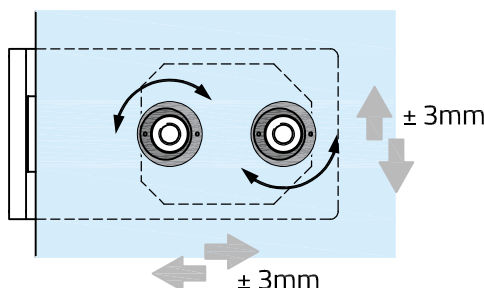
Art. 77410504090-12

Art. 77410504090-26

**Glasbearbeitung:**  
Glass preparation:



**Exzenter-Glasbohrungshülsen:**  
Eccentric glass bore sleeves:

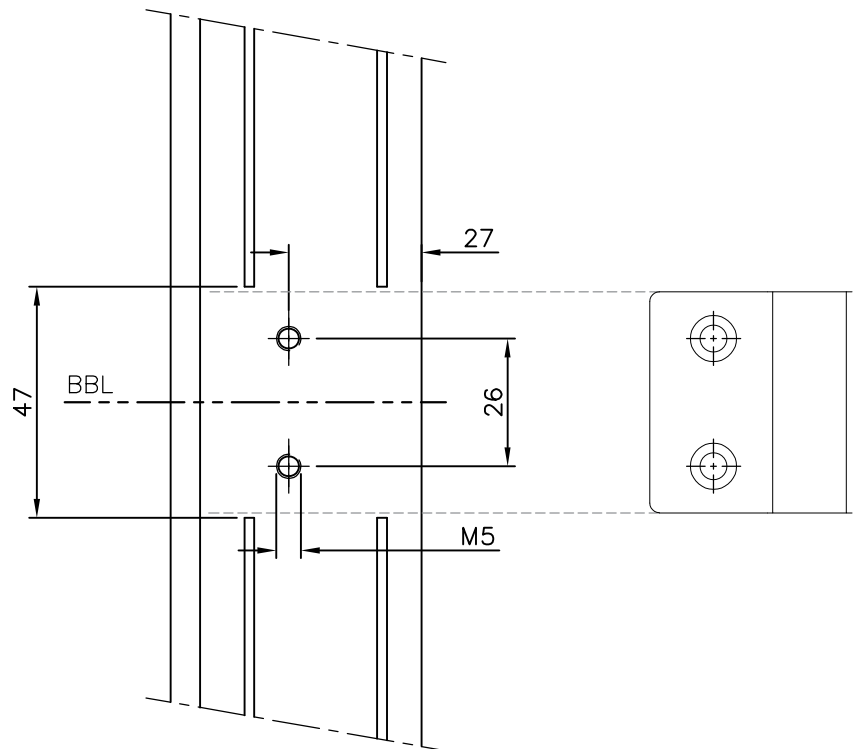
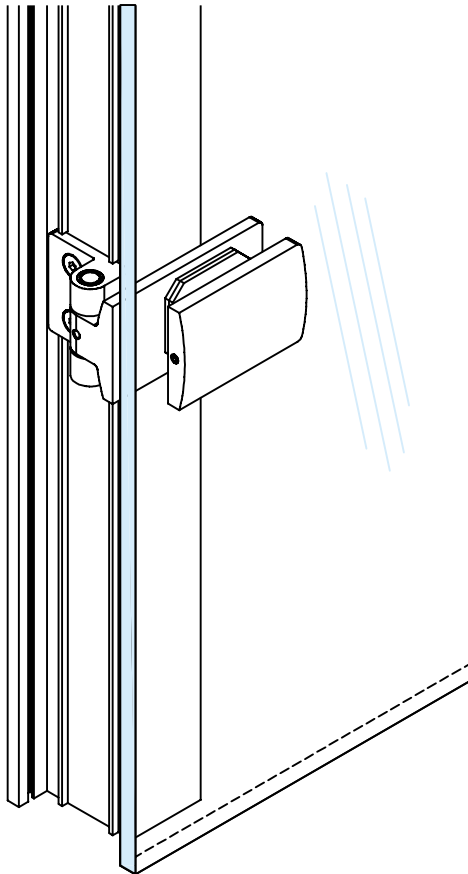


Empfehlungsmaße entsprechend \*DIN 18268  
Recommended dimensions according to \*DIN 18268

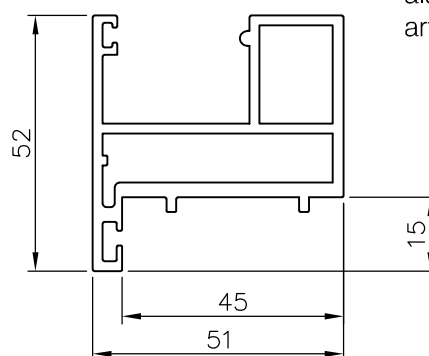
Glastürhöhe Glass door height	Abstand Zargenfalz - BBL(A) distance frame rebate - BBL(A)	Abstand BBL(A) - BBL(B) distance BBL(A) - BBL(B)
1860 mm - 2110 mm	241 +1 mm	1435 mm ±0,5 mm
2111 mm - 2235 mm	241 +1 mm	1560 mm ±0,5 mm
2236 mm - 2360 mm	241 +1 mm	1685 mm ±0,5 mm

Art. 77410504090-10  
Art. 77410504090-12  
Art. 77410504090-26

Detail Aluminium Zarge:  
Detail aluminium frame:



aluminium door frame  
art.: 49.5252....



**G-FITTINGS GmbH**

Marie-Curie-Straße 16-18  
46446 Emmerich am Rhein  
T +49 (0)2822 962 0  
F +49 (0)2822 962 221  
E sales@g-fittings.com