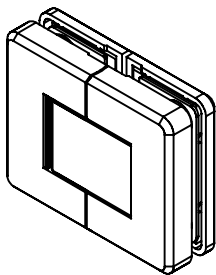


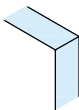
Technische Daten:  
Glastürscharnier - LENI

Datasheet:  
Glass door hinge - LENI

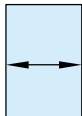
Art. 77417212180-10  
Art. 77417212180-12  
Art. 77417212180-26



Ausführung:  
Options:



8 mm  
-  
10 mm



750 mm  
max.



50 kg max.

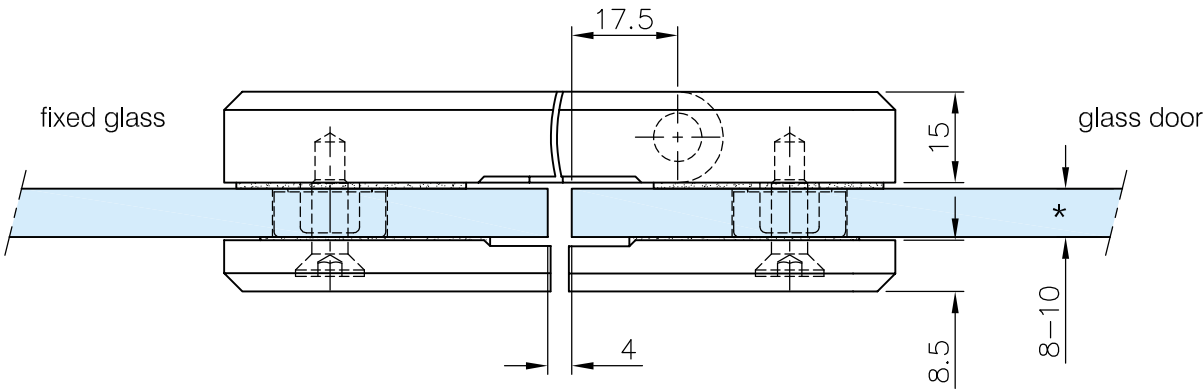
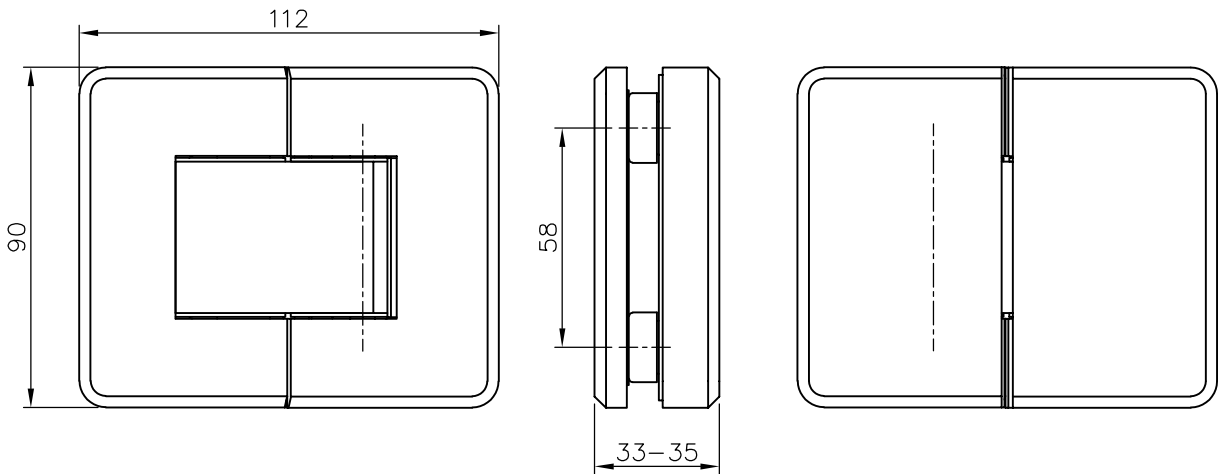
Material:  
Material: V2A  
Stainless steel AISI 304

Gewicht: / Weight: 1,350 kg

Oberflächen:  
Finish: Edelstahl-Design  
Stainless steel design

Chrom-Design  
Chrome design

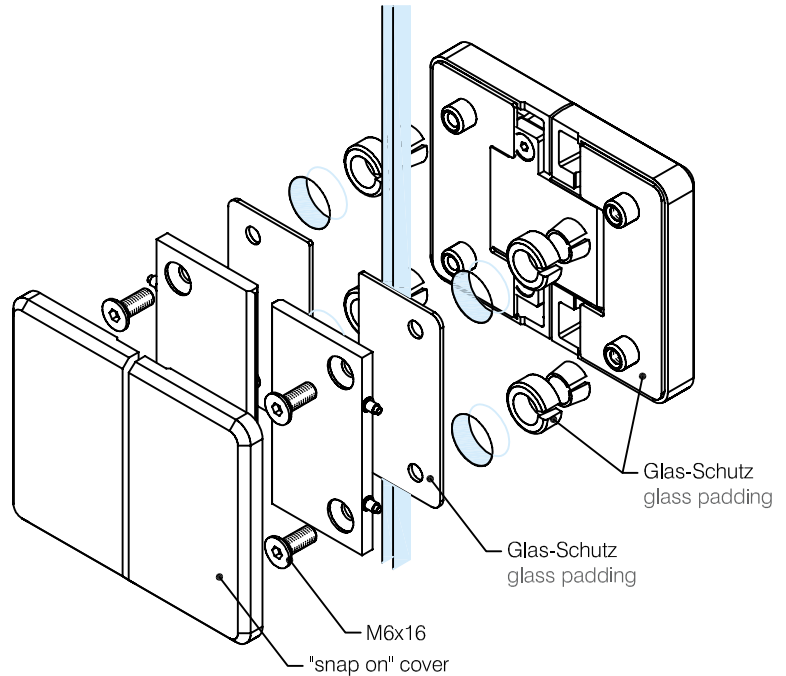
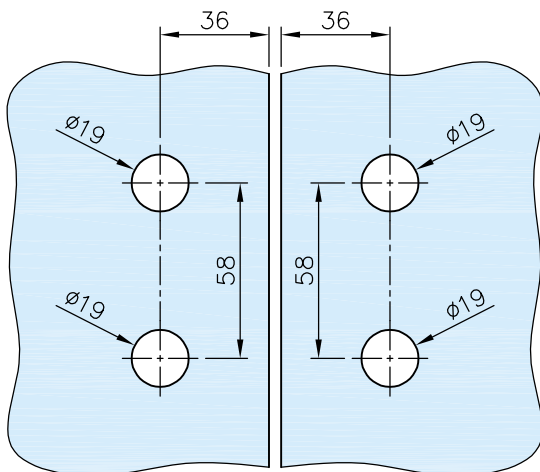
Anthrazit-Design  
Anthracite design



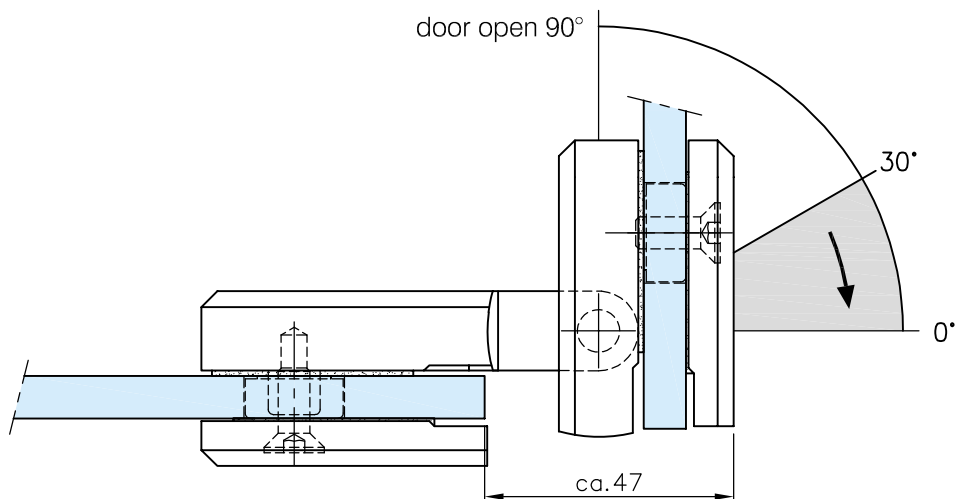
\*drawing shows  
8mm glass

Art. 77417212180-10  
Art. 77417212180-12  
Art. 77417212180-26

## Glasbearbeitung: Glass preparation:



## Öffnung: Opening:



automatic closing action from 30°

## G-FITTINGS GmbH

Marie-Curie-Straße 16-18  
46446 Emmerich am Rhein  
T +49 (0)2822 962 0  
F +49 (0)2822 962 221  
E sales@g-fittings.com