

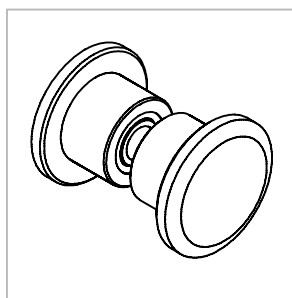
Technische Daten:
Glastürknopf, zweiseitig - LIOCH

Datasheet:
Glass door knob, double-sided - LIOCH

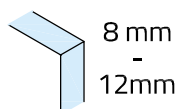
Art. 77470101040-10

Art. 77470101040-12

Art. 77470101040-26



Ausführung:
Options:



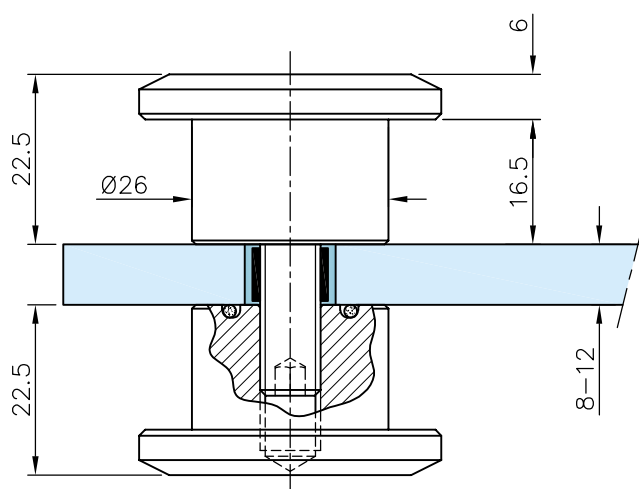
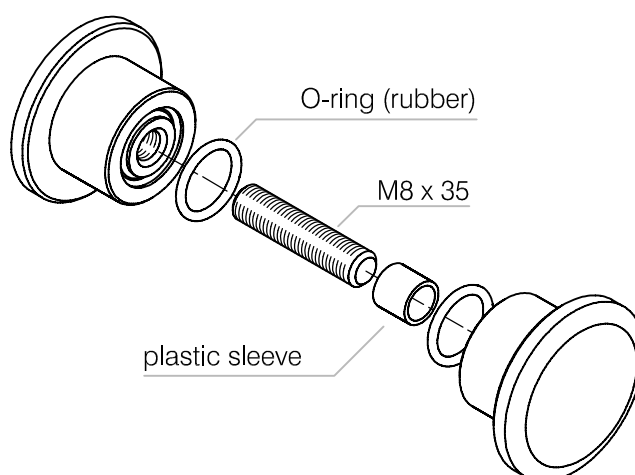
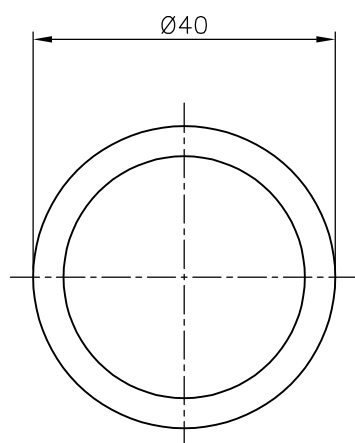
Material: V2A
Material: Stainless steel AISI 304

Gewicht: / Weight: 0,24 kg

Oberflächen: Edelstahl-Design
Finish: Stainless steel design

Chrom-Design
Chrome design

Anthrazit-Design
Anthracite design



Glasbearbeitung:
Glass preparation:

