

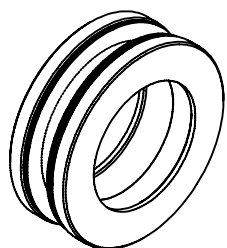
Technische Daten:
Offene Griffmuschel für Glastür - MIKKI

Datasheet:
Open recessed grip for glass door - MIKKI

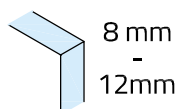
Art. 77470104060-10

Art. 77470104060-12

Art. 77470104060-26



Ausführung:
Options:



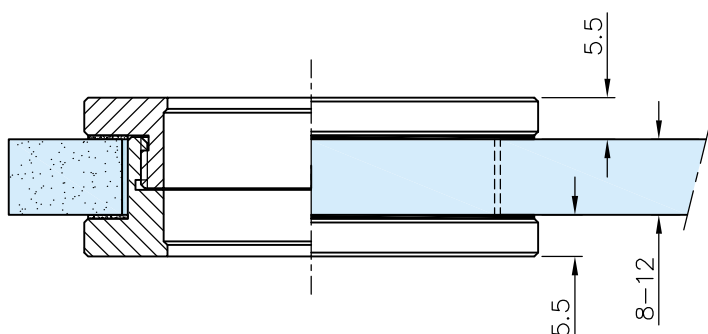
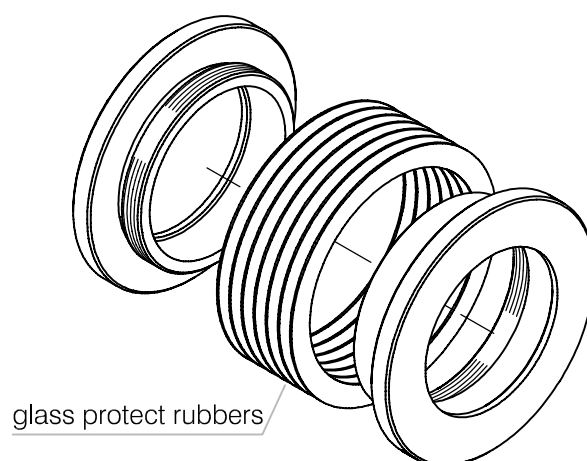
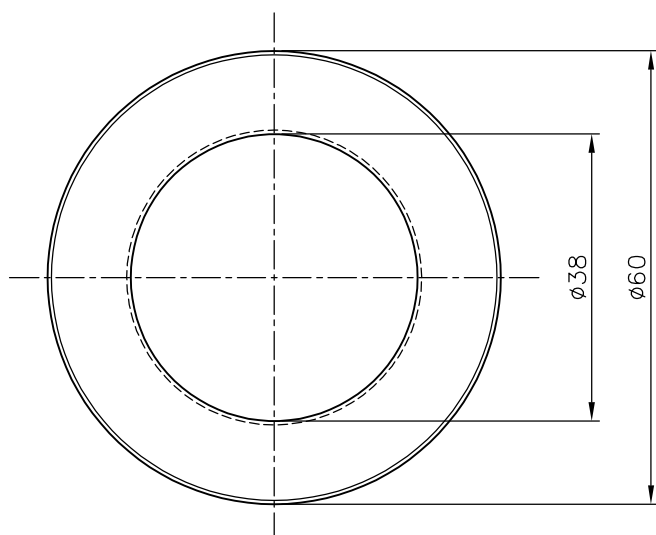
Material: V2A
Material: Stainless steel AISI 304

Gewicht: / Weight: 0,18 kg

Oberflächen: Edelstahl-Design
Finish: Stainless steel design

Chrom-Design
Chrome design

Anthrazit-Design
Anthracite design



Glasbearbeitung:
Glass preparation:

